

# FABRICS

*for*

# KRISTENSEN CHAIRS





## KRISTENSEN STANDARDS

*Handselected quality standards*

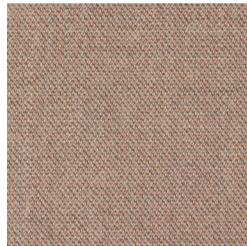
---

### Gabriel®

#### CAPTURE FABRIC

Wool

Capture is a lightly felted and multi-coloured high quality wool fabric in a casual yet sophisticated tweed look. This fabric brings warmth and a luxurious feel to any chair.



**4803**  
Capture



**5501**  
Capture

#### OTHER COLORS & SPECIFICATIONS

—  
This fabric is available in 25 different colors. For more information, go to Gabriels website:

<https://www.gabriel.dk/en/fabrics/textile/Capture/44676>

**Material:** 85% wool from New Zealand / 15% polyamid

**Martindale:** 200,000

**Maintenance:** Dry cleaning

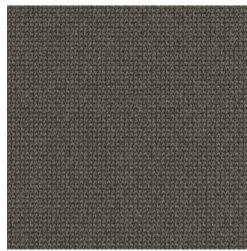
**NB:** This textile is unfortunately not approved for the UK Domestic Marked!

### Gabriel®

#### CURA FABRIC

Recycled Polyester

Cura is a multi-purpose, two-coloured upholstery fabric made from 98% post-consumer recycled polyester. Use Cura at home or for office furniture to transform workplaces into homey interiors.



**61169**  
Cura

#### OTHER COLORS & SPECIFICATIONS

—  
This fabric is available in 25 different colors. For more information, go to Gabriels website:

<https://www.gabriel.dk/en/fabrics/textile/Cura/52856>

**Material:** 98% post-consumer recycled polyester / 2% polyester

**Martindale:** 100,000

**Maintenance:** Washable at 40°C (shrinkage max 1%) – Washable at 60°C (shrinkage max 2%)

**NB:** This textile is unfortunately not approved for the UK Domestic Marked!

---

## Trendline

#### SIGMA LEATHER

Semianiline

—  
Sigma is a high quality, Argentine semianiline leather. This leather has a nice texture and a super soft feel. This leather gives a practical yet luxurious chair.



**30001 - Black**  
Sigma



**30010 - Brandy**  
Sigma

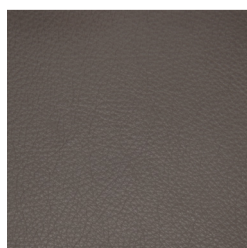
#### INFORMATON & SPECIFICATIONS

—  
This fabric is available in 16 different colors (min. order of 4 chairs + extra cost) For more information, go to Trendlines website:

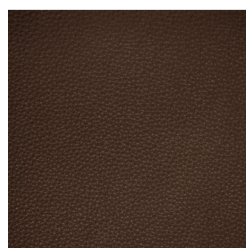
[www.trendline-leather.dk](http://www.trendline-leather.dk)

**Material:** 100% Argentine semianiline leather

**Thickness:** 1,1 - 1,3 mm



**30016 - Sahara**  
Sigma



**30042 - Coffee**  
Sigma



## MARGRETHE

*Recycled Woven Wool*

Margrethe is a further development of our bestseller Wooly. It is the same quality in another weave. Same yarn, same properties. You can also combine the two collections. Only the imagination sets the limit.

**70% RECYCLED WOOL,  
25% Polyamide, 5% Mixed fibers.**

**Martindale: 250.000**

**Maintenance: Dry cleaning**

**Manufacturer:**  
**nevotex**



*Fabric texture example*

**NB: This textile is unfortunately not approved for the UK Domestic Marked!**



See more info about the colours on this link:

<https://nevotexwebshop.dk/da-dk/produkter/beklaedningsmateriale/moebelstoffer/alle-stoffer/margrethe/margrethe-721010-bottle-green>



## MEGAN

*Polyester Velour*

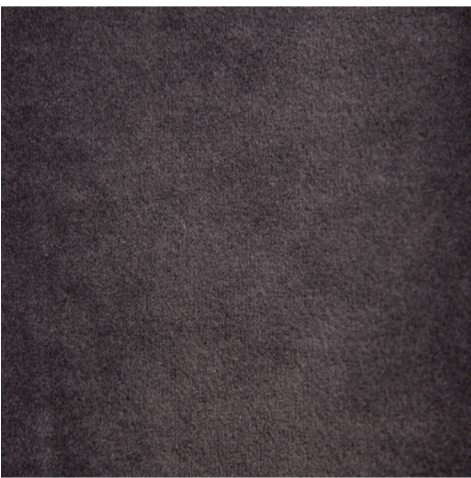
Megan is a soft and elegant polyester velour, which contributes with an exclusive look.

100% polyester

**Martindale:** 170.000

**Maintenance:** Washable at 40°C

**Manufacturer:**  
**nevotex**



*Fabric texture example*

**NB:** This textile is unfortunately not approved for the UK Domestic Market!



*The whole colour range.*



## WOOLY

### *Recycled Felted Wool*

Wooly is made of felted recycled wool. It may be leftover material from clothing manufacturing or other wool products that are recycled. Each kilogram of pure new wool produced generates 9 kg of carbon dioxide. Processing 1 kilo of recycled wool generates just 0.5 kg of carbon dioxide.

**70% RECYCLED WOOL,  
25% Polyamide, 5% Mixed fibers**

**Martindale: 150.000**

**Maintenance: Dry cleaning**

**Manufacturer:**

**nevotex**



*Fabric texture example*

**NB: This textile is unfortunately not approved for the UK Domestic Market!**

- WOOLY - 1016 Bone
- WOOLY - 2256 Ivory Mel
- WOOLY - 2151 Beige
- WOOLY - 1037 Sand
- WOOLY - 1026 Light brown
- WOOLY PLUS - 9202 Taupe
- WOOLY - 1008 Brown
- WOOLY PLUS - 1008 B Ebony
- WOOLY PLUS - 2153 Java Mel.
- WOOLY TREND - 380037 Rust
- WOOLY PLUS - 1040 Brick Mel
- WOOLY PLUS - 2278 Orange Mel.
- WOOLY - 2012 B Terra
- WOOLY PLUS - 2016 B Dark Terrac
- WOOLY TREND - 2301 Marsala
- WOOLY PLUS - 9145 Pumpkin
- WOOLY PLUS - 2272 Dijon
- WOOLY PLUS - 2252 Soft Green
- WOOLY PLUS - 9759 Leaf
- WOOLY PLUS - 2270 Lime
- WOOLY - 2079 Green
- WOOLY PLUS - 2269 Emerald
- WOOLY TREND - 2302 Court
- WOOLY TREND - 849139 Teal
- WOOLY TREND - 840069 Juniper
- WOOLY - 1011 Bottle Green
- WOOLY - 1010 Forest
- WOOLY TREND - 842287 Lagoon
- WOOLY PLUS - 9860 Soft Blue
- WOOLY TREND - 228881 Lapis
- WOOLY PLUS - 2288 Soda
- WOOLY TREND - 22882287 Aquamarin
- WOOLY PLUS - 0106 Turquoise
- WOOLY PLUS - 2287 Opal
- WOOLY - 2040 Petrol
- WOOLY PLUS - 2279 Ocean
- WOOLY PLUS - 2011 B Red
- WOOLY - 2011 Tulip
- WOOLY - 2142 Raspberry
- WOOLY PLUS - 9872 Pink
- WOOLY - 1044 Cerise
- WOOLY - 2020 Lilac Mel
- WOOLY - 2014 Plum
- WOOLY PLUS - 9233 Wine
- WOOLY - 2238 Aubergine
- WOOLY - 2255 Dark Lilac
- WOOLY PLUS - 0091 Berry
- WOOLY - 2019 Marine
- WOOLY - 1007 Navy
- WOOLY - 1000 Light grey
- WOOLY - 1042 Grafit
- WOOLY - 1001 Antracit
- WOOLY - 1002 Koks
- WOOLY - 1003 Black



See more info about the colours on this link:

<https://nevotexwebshop.dk/da-dk/produkter/beklaedningsmateriale/moebelstoffer/alle-stoffer/wooly/wooly-2288-soda>



## MINE

*Polyester Chenille*

Mine is a soft yet durable chenille fabric with many applications.

96% Polyester, 4% Nylon

**Martindale:** 45.000

**Maintenance:** Washable at 30°C

**Manufacturer:**

**Textafoam**



*Fabric texture example*

**NB:** This textile is unfortunately not approved for the UK Domestic Marked!



*The whole colour range.*



## FABRICS FOR KRISTENSEN CHAIRS

—

### ALPINE

*Polyester Bouclé*

—

Alpine is a soft, voluminous and elegant bouclé woven quality.

96% Polyester, 4% Acrylic fibres

**Martindale:** 75.000

**Maintenance:** Wash or dry cleaning

**Manufacturer:**

**Textafoam**



*Fabric texture example*

**NB:** This textile is unfortunately not approved for the UK Domestic Market!

IVORY 101

**NEW:** CHAMPAGNE 186 >

NATURAL 01

**NEW:** CLAY 84 >

BEIGE 05

**NEW:** TAUPE 12 >

BROWN 15

DARK BROWN 18

ONYX 169

GREY 65

STEEL 149

THYME 206

FOREST 162

DENIM 153

INDIGO 90

HAZEL 96

BRONZE 116



*The whole colour range.*